

Skylight Kit



CONTENTS & INSTALLATION INSTRUCTIONS

Contents:

Skylight Fan Mounting Assembly	1 off
Installation Instruction	1 off.
Bolt M4x30mm	6 off

Materials Not Supplied:

Tube of Silicon	1 off.
-----------------	--------

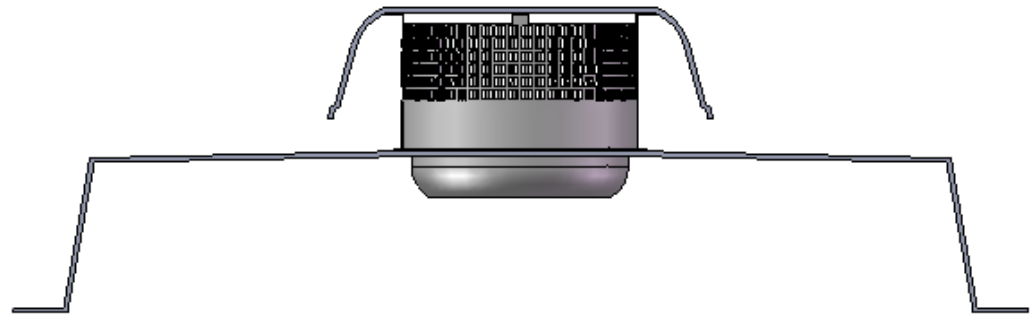


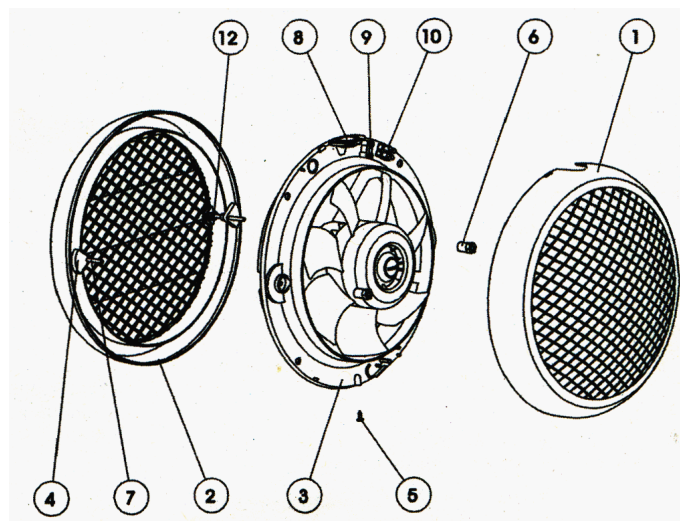
Figure 1: Skylight fan installed in skylight screen

Inspection:

Ensure the unit has arrived in good condition and no parts are damaged.

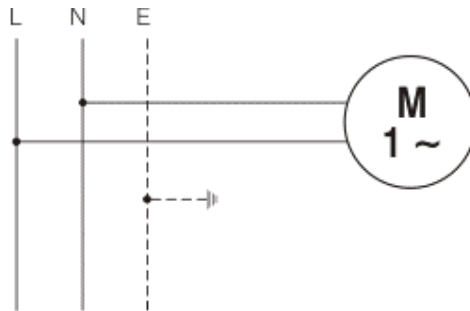
Installation:

1. Installation of this product should be carried out by appropriately qualified persons.
2. Using the template provided, mark and cut a hole in the skylight screen. Also mark and drill the 4 x 5mm holes.
NOTE: The cutting template is designed to be used on flat surfaces. If you use the template on highly curved surfaces the hole diameter and position may be inaccurate.
3. Remove the interior grille (1) from the HCM fan by loosening the fixing screw (5)
4. Remove the exterior grille (2) by removing the interior plastic fixing nuts (6)
5. From the underside of the skylight screen, place the discharge side of the HCM fan through the cut out hole.
6. From the top side of the skylight screen, place the skylight fan mounting assembly over the discharge of the HCM fan
7. Fix the HCM fan to the mounting assembly with the bolts provided through each of the holes in the fan.
8. To ensure a watertight seal run a bead of silicon between the skylight screen and mounting assembly.
9. Cut a small hole in the grommet (8) and feed electrical cable through.
10. Connect electrical cable to terminal block in accordance to the wiring diagram (**This is to be done by a qualified electrician**).
11. Refit the interior grille (1) to the HCM fan case and fix into position by tightening the fixing screw (5)
12. Test run the fan to ensure free rotation.



Electrical Connections:

This product is designed to be wired by a qualified electrician.



Safety Considerations:

1. All connections must be in accordance with any local regulations. This product must be installed by a licensed electrician. Minimum size cable to be used is 1.0mm².
2. The Licensed Electrical installer must ensure that an approved means of disconnection be incorporated into the fixed wiring.
3. This appliance is not intended for use by young children or infirm persons without supervision.
4. For duct or partition mount, precautions must be taken to avoid the back-flow of gases into the room from the open flue of gas or other open-fire appliances.

WARRANTY:

- Fantech Pty Ltd warrants products of its manufacture when not misused or neglected to be free of defects in workmanship and/or materials. Our obligation under this warranty is limited to repairing or exchanging F.O.B. factory, any part, assembly or portion found to be defective within one year from the date of commissioning but not to exceed eighteen (18) months from date of shipment from our factory.
- The Company assumes no responsibility for labour costs involved in the removal of defective parts, installation of new parts or related service charges.
- The Company shall have the option of requiring the return of the defective part (transportation prepaid by the Buyer) to establish the claim.
- Warranty will be void if installation is not carried out by qualified personnel in accordance with these instructions and good trade practice.
- Fully detailed warranty conditions are contained in Fantech's Standard Conditions of Trading.